



**HIGHER RESISTANCE  
AND DURABILITY  
FOR WOOD COATINGS**

Mowilith® LDM 7601



# HIGHER RESISTANCE AND DURABILITY FOR WOOD COATINGS MOWILITH® LDM 7601

**Environmentally advanced waterbased copolymer dispersion based on acrylic esters.**

Mowilith® LDM 7601 is a non-plasticized aqueous dispersion highly recommended for wood coatings – stains, varnish and solid colour. This dispersion has excellent film hardness, excellent clarity and antiblocking properties. The product is self-crosslinking and can be combined with polyurethane emulsions providing increased flexibility and adhesion of the polymer film.

The PVC of pigmented paints should not be higher than approx. 30% as otherwise cracking may occur.

## Applications sector

- Clear varnishes
- Furniture coatings
- Parquet varnishes
- Glossy paints
- Exterior and interior wood coatings

## Benefits

- Providing longer floor durability even with high domestic traffic
- Keep the attractive look of the furniture for longer due to high scratch and water resistance

## Key features and advantages

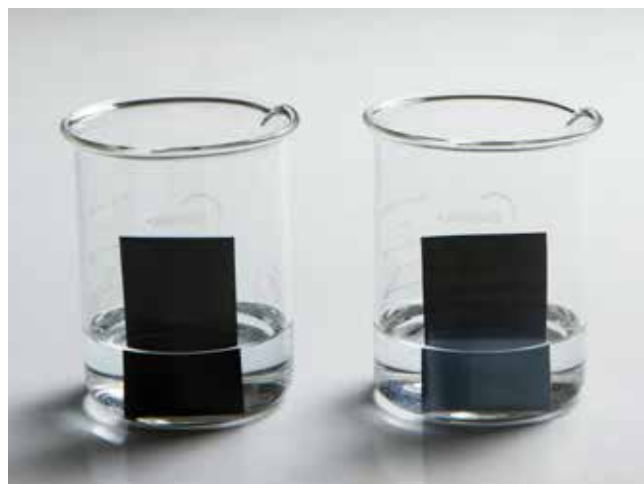
- Excellent clarity
- High antiblocking properties
- Outstanding chemical and water resistance
- Enhanced superficial hardness

SPECIFICATION	STANDARD	UNIT	VALUE
Solid Content (130 °C; 30 min)	ISO 3251	%	45 – 48
Brookfield Viscosity (25 °C; 3/20)	ISO 2555	mPa.s	250 – 2000
pH	ISO 976	-	7.0 – 8.0



**Figure 1. Water resistance test**

Left side: High gloss – Varnish with Mowilith® LDM 7601  
Right Side: Low gloss – Standard wood varnish



**Figure 2. Chemical resistant test (Alcohol)**

Left side: Clear film – Varnish with Mowilith® LDM 7601  
Right side: Turbid film – Standard wood varnish

[www.cas.archroma.com](http://www.cas.archroma.com)

## ARCHROMA MANAGEMENT LLC

Neuhofstrasse 11  
4153 Reinach  
Switzerland

## Coatings, Adhesives and Sealants

Av. das Nações Unidas, 18.001  
04795-900 São Paulo SP  
Brazil

This information corresponds to the present state of our knowledge and is intended as a general description of our products and their possible applications. Archroma makes no warranties, express or implied, as to the information's accuracy, adequacy, sufficiency or freedom from defect and assumes no liability in connection with any use of this information. Any user of this product is responsible for determining the suitability of Archroma's products for its particular application. \*Nothing included in this information waives any of Archroma's General Terms and Conditions of Sale, which control any purchase unless it agrees otherwise in writing. Any existing intellectual/industrial property rights must be observed. Due to possible changes in our products and applicable national and international regulations and laws, the status of our products may change. Material Safety Data Sheets providing safety precautions, that should be observed when handling or storing Archroma products, are available upon request and are provided in compliance with applicable law. You should obtain and review the applicable Material Safety Data Sheet information before handling any of these products. For additional information, please contact Archroma. \*For sales to customers located within the United States and Canada the following applies in addition: NO EXPRESS OR IMPLIED WARRANTY IS MADE OF THE MERCHANTABILITY, SUITABILITY, FITNESS FOR A PARTICULAR PURPOSE OR OTHERWISE OF ANY PRODUCT OR SERVICE.

© Trademark of Archroma registered in many countries  
© 2017 Archroma